



M10X

MODERN DEFENSE RIFLE™

7 . 6 2 X 3 9



M+M INDUSTRIES
MODERN DEFENSE RIFLES™

CONTENTS

Warning / 3
Notice / 3
Ammunition / 3
Safety / 4
Health and Environmental Warning / 5
Misfire Warning / 5
Loading the Magazine / 6
Inserting the Magazine into the Rifle / 7
Firing the Rifle / 8
Unloading the Rifle / 9
Disassembly / 10
Assembly / 15
Gas Valve Plug Adjustment / 18
Cleaning / 19
Lubrication / 19
Accessories / 20
Replacement Parts Policy / 21
Domestic Limited Warranty / 21
Warranty Registration / 22
M+MM10 Series Sporting/Defense Rifle Limited Warranty / 22
How to Obtain Warranty Service / 23

Warning

This firearm could cause accidental death or injury if it is improperly handled. It is imperative to read and understand the information contained within this manual in its entirety prior to handling and/or attempting to operate this firearm. In the event of lending, selling, or any transfer this firearm; this manual should always accompany it.

Notice

This manual is for informational purposes only. The owner of this firearm is ultimately responsible for the safe operation, responsible use, and suitable storage of this firearm. Only a competent gunsmith or the manufacturer should perform any repairs and/or adjustments to this firearm.

M+M Industries shall not be responsible for any injury, damage, or death that may result either from deliberate or unintentional discharge of this firearm. Upon purchase of this firearm, the purchaser personally assumes any and all liability for this firearm and is solely responsible for maintenance, safekeeping, and its operation.

Ammunition

The M10X™ is a modern, American-made firearm that is designed for use with standard, factory-made ammunition manufactured to SAMMI specifications. Use only original, high-quality, commercially manufactured ammunition in good condition that is clearly labeled as matching the caliber of this firearm. The caliber of this firearm is clearly marked on the upper receiver housing on the left side of the firearm.

Use of reloaded, hand-loaded, re-manufactured, or other non-standard ammunition may result in serious injury and/or damage to the firearm. The manufacturer of this firearm shall not be responsible for any failure, malfunction, or injury resulting from the use of non-standard or defective ammunition.

This firearm should always be transported, carried, and stored in an empty, unloaded condition. To prevent accidental death, injury, or property damage, the owner of this firearm should always obey State and Federal Regulations for firearm transportation/operation and follow the manufacturer's recommendations. For more information please visit NRAILA.ORG.

Safety

1. Always handle a firearm as if it is loaded.
2. Always be aware of where the muzzle is pointed.
3. Never point this or any firearm at anything you do not intend to shoot.
4. Always use common sense while handling and operating any firearm.
5. The rifle is never "SAFE" unless the chamber is CLEAR. You cannot operate the charging handle with a magazine in place and still be sure the chamber is CLEAR. Remove the magazine first, and then confirm the chamber is CLEAR.
6. Never rely on second hand knowledge while making a determination regarding whether this firearm is or is not loaded: Always personally check the magazine and chamber for ammunition while having the firearm pointed in a safe direction and while your finger is off the trigger.
7. Whenever you set the firearm down or hand it to another person, remove the magazine and ensure that the chamber is clear so that the rifle cannot ever be fired accidentally.
8. Always keep and carry this or any firearm unloaded, with the safety in the "Safe" position.
9. Always handle this rifle in a way that prevents accidental injury to yourself and others in the event of an accidental discharge, including a stumble or fall, or in the case the firearm is accidentally dropped. It is recommended that a dropped firearm should be examined by a competent gunsmith before further use.
10. Never leave a loaded firearm unattended. Never leave ammunition out or unattended.
11. Never leave a firearm cocked, or ready to fire.
12. Always store this firearm in a safe, unloaded condition, placed in a secure space/gun safe away from the reach of children, and always use safety locking devices. Such devices are readily available at retailers, or safety kits and locks are available through: <http://www.projectchildsafe.org/>
13. Always use factory loaded ammunition in good condition, of the proper caliber and type, designed for this firearm. Inspect ammunition before use. Never use damaged or dirty ammunition, as unsafe conditions can arise, and/or damage to the firearm can result.
14. Understand the proper operation of this firearm before handling and operating it. Never pass any firearm to someone who is not familiar with the operation of the firearm, or who is not familiar with firearm safety.
15. Proper upkeep, cleaning, and maintenance is necessary to preserve the life of this rifle and its quality of operation.
16. Always instruct children to properly respect firearms and firearm safety. If you teach your children to shoot, always train them in gun safety, or have them trained by a qualified instructor. Supervise them closely whenever firearms are present. Never leave children and firearms together and unattended. Always teach children never to handle any firearm when you are not present. More information on children's gun safety can be found: EDDIEEAGLE.NRA.ORG

17. While discharging a firearm, always clearly identify the target and always be aware of the back stop (area beyond the intended target) so that projectiles do not cause accidental death, injury, or destruction. A fired bullet can travel in excess of 1.5 miles.
18. Never place your finger on the trigger until the firearm is pointed at the intended target, and you are ready to fire.
19. Before firing, always inspect the chamber and barrel for obstruction. Discharging an obstructed firearm can result in catastrophic failure, injury, or death.
20. Never consume alcoholic beverages, use illicit drugs, or take any medications that can impair judgment before or during operation of this or any firearm.
21. Always wear impact resistant eye protection and sufficient hearing protection while handling/supervising use of this or any firearm, either as an operator or a bystander. The noise of discharging firearms may cause permanent hearing loss and projectile fragments may injure areas of the body that are not adequately protected, including the eyes.
22. Never shoot at a hard surface, such as a rock or cement as the bullet will ricochet.
23. Never shoot at a liquid surface such as water.
24. Never discharge a firearm at or near any flammable material.

Health and Environmental Warning

Operating and cleaning firearms in poorly ventilated areas, or handling ammunition may result in lead exposure and other potentially harmful substances. Always wash hands thoroughly after using and cleaning this firearm and/or handling ammunition.

REMOVE THE MAGAZINE then CLEAR THE CHAMBER.



Chamber is not clear



Chamber is clear

NOTE: The rifle is not "SAFE" unless the chamber is CLEAR. You cannot operate the charging handle with a magazine in place and still be sure the chamber is CLEAR. Remove the magazine first, and then ensure the chamber is CLEAR.

Loading the Magazine

The M10X™ uses standard AK double-stack curved magazines. Always select magazines that are made for the correct caliber for this rifle. This rifle is stamped with the proper caliber on the left hand side of the upper receiver housing/ aluminum forearm cover. To load a detachable magazine box, use only ammunition of the exact caliber this rifle is manufactured for. Magazine capacity limits vary. *If you are not using a standard 30-round curved magazine, you must be familiar with how the magazine you are using should be loaded with cartridges and how it is supposed to be oriented into this rifle.

To load a standard, curved, thirty-round box magazine:

- With one hand, grip and hold the magazine so that the "lug" (the small triangular protruding tab located towards the upper back of the magazine clip) and the outer



Chamber/Caliber markings



curved edge are facing towards the butt of the rifle

- With the other hand, orient and hold a single bullet cartridge horizontally so that the bullet points away from the body (the bullet cartridge tip should point facing the inside of the magazine's inner/smaller curved edge) and place the cartridge between the magazine's lips
- Insert the bullet cartridge (one-at-a-time) horizontally and feed it in the magazine by pressing the cartridge down into the mouth of the spring loaded magazine lips until you hear it "click" into place
- Repeat this loading process until the magazine's cartridge capacity is reached
- Never over-load the magazine with more cartridges than it is designed for

INSERTING the Magazine into the Rifle

After following all safety procedures, including checking the chamber and bore for obstruction, and after arriving at the designated shooting location, the magazine may now be inserted into the magazine well of an unloaded rifle.



NOTE: Before and during magazine insertion, always ensure the rifle is pointed in a safe direction and the safety lever is set on "S" for Safe.

To begin magazine clip insertion:

- Hold the magazine in the same way it is held while loading the bullet cartridges (with lug and outer edge oriented toward butt of rifle)
- Orient the magazine so the inner curve is positioned at a 60 degree angle in relation to the horizontal magazine well located in the bottom of the rifle
- Next, insert the magazine so the front edge of it catches the anterior (front) portion of the magazine well and the



magazine will now be anchored

- Anchoring the magazine in the magazine well will allow you to pull the magazine back towards the trigger guard of the rifle until the magazine 'engages' or locks into place
- Once the magazine is locked into the rifle, pull down on it to ensure proper positioning

NOTE: To remove the magazine, grip the magazine with one hand, while laying a finger on the magazine release lever. Pinch the magazine release lever towards the magazine, and rotate the bottom of the magazine towards the muzzle of the rifle. The magazine will come out of the magazine well, and can be removed.

Firing the Rifle

NOTE: Always keep all fingers off the trigger of a loaded rifle until you have followed all safety procedures and are aiming at the intended target to avoid serious injury or death. The owner/operator of this rifle shall adhere to all Federal, State, and Local Regulations including Safety Recommendations while operating this firearm.

- Once the magazine is properly locked in the rifle, and the rifle is pointed safely at the intended target, a round must be chambered. To do so, begin by switching the safety lever to the fire position (toward the marked "F" on the receiver): This practice allows the bolt to be manipulated
- Then, pull the charging handle all the way back until it stops
- Next, completely RELEASE the charging handle so that the internal spring in the firearm carries it forward. Never ease the charging handle forward. Never hold the charging handle while it moves forward under the power of the internal spring



NOTE: Allowing the spring to carry the mechanism forward will ensure the cartridge is fully seated in the chamber, and that the bolt is locked.

NOTE: A partial completion of this maneuver can leave the rifle “out of battery” due to an improperly chambered round, and the firearm will not fire.

At this time, the rifle is ready to fire: Point it toward the intended target, take aim, place your finger on the trigger and squeeze it back until the rifle discharges.

This is a semi-automatic firearm. After firing, a shell will be ejected, and the mechanism will re-load the rifle each time you discharge the rifle, until the ammunition is expended. At any time you want to stop shooting, remove finger off the trigger and switch the safety mechanism to safe (“S”) while always pointing the rifle in a safe direction. Do not pull the trigger when the rifle safety mechanism is on safe and never rely on the safety to prevent the rifle from firing.

Unloading the Rifle

After you have finished shooting, unload the rifle and confirm that all ammunition has been expended. Follow the steps below to unload the rifle:

1. Remove the magazine.
2. Once the magazine is removed, (always ensure the rifle is pointed in a safe direction) pull the charging handle backwards, while holding the action open while looking inside the rifle at the chamber.
3. Next, verify that the chamber is empty (no cartridge head is visible).
4. Finally, release the charging handle, and switch the safety to the safe (“S”) position.

The rifle may now be placed in storage or a transportation case. For further safety, you may insert the orange plastic chamber flag provided partially through the ejection port to prevent the bolt from fully closing.

NOTE: Never insert a steel or metal object through the ejection port.



Use a chamber flag to prevent the bolt from closing completely

Disassembly

Disassembly for cleaning or inspection is periodically necessary, and may be accomplished in a few steps. To disassemble the rifle, always begin with a safe, unloaded rifle, with the magazine removed.

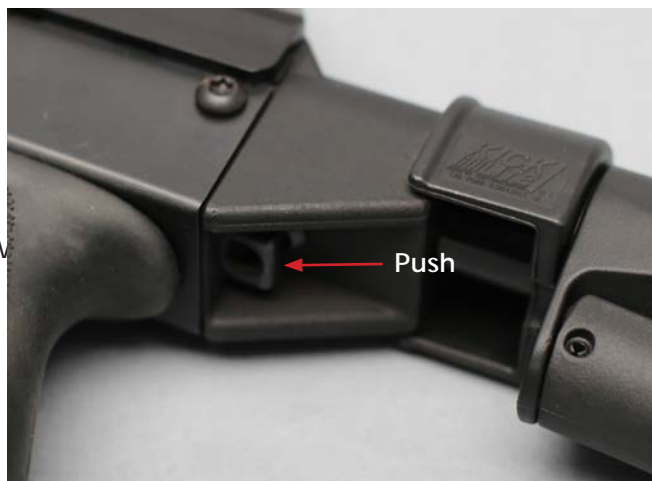
Depress the receiver latch located just forward of the butt stock, on the underside of the rifle. This action allows both upper and lower receivers to separate and the rifle will "open" on a hinge pin.

Place the open rifle on its side on a clean surface so that the charging handle is up.

NOTE: In case of the Zhukov rifle version, you can access the receiver latch in two ways:

1. Via the left side of the butt stock, press the ridged button in and fold the butt stock over towards the right exposing the receiver latch. Next, push in the receiver latch while simultaneously pulling up on the upper receiver, and the rifle will separate (open) on a hinge pin.

2. Via the oval window located on the underside of the butt stock behind the pistol grip exposes the receiver latch without having to manually fold the butt stock. Use a flat-head screwdriver (or a similar object) at an angle to forcibly depress the receiver latch while simultaneously pulling up on the upper receiver, and the rifle will separate (open) on a hinge pin.

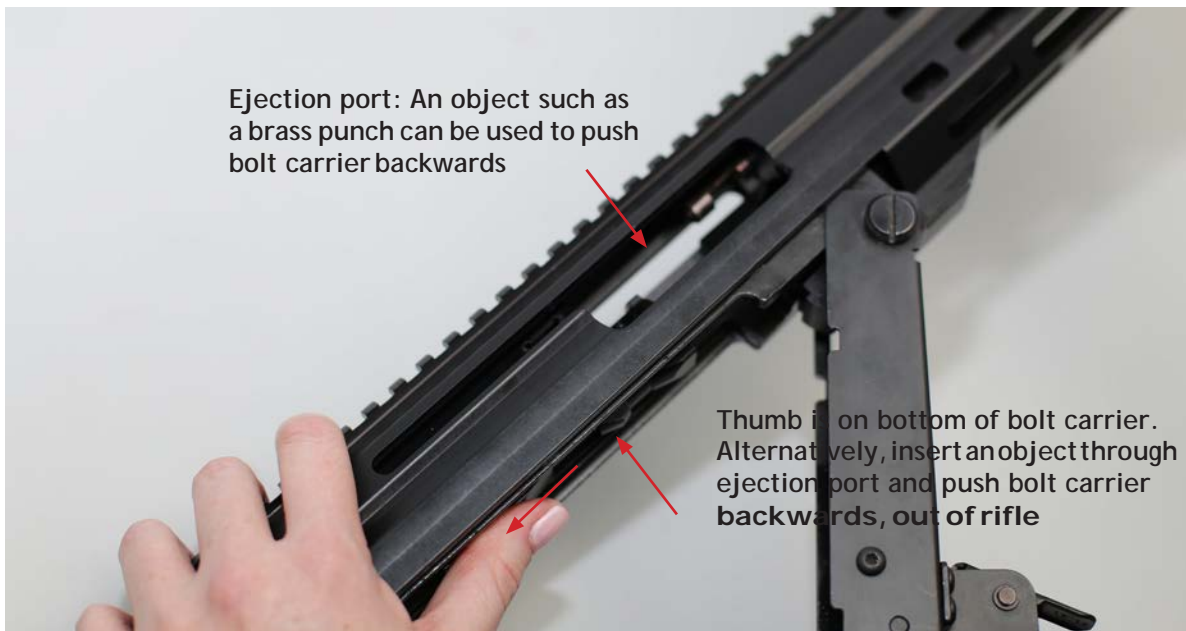


Receiver latch moves forward towards muzzle to open the action

Locate the charging handle and with the pointed tip of the orange chamber safety flag provided, push in the metal center of the charging handle while simultaneously pulling the body of the handle away from the rifle. This disengages the gas piston from the bolt carrier.



The bolt carrier is now exposed. Using the charging handle push the bolt carrier assembly to the rear and remove from the receiver.



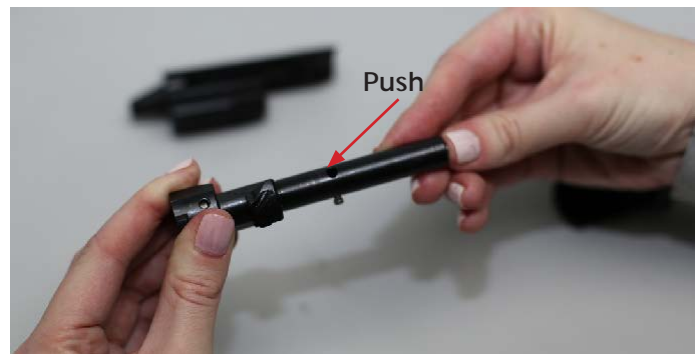
For cleaning the bolt and firing pin, rotate the bolt-head counterclockwise until the lug clears the cam and pull forward to remove it from the carrier.

To remove the firing pin:

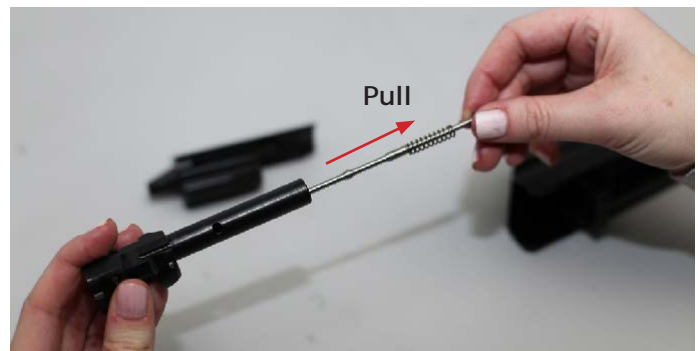
1. Depress the firing pin by pressing the rear of the bolt on a flat surface or against your thumb.



2. Remove the firing pin retaining pin by pressing with a punch or small pen against it, until it is fully removed (Use caution work on top of a clean surface or towels since it is a small part and can get easily lost).



3. Now you can pull on the firing pin and firing pin spring and remove the assembly from the bolt.

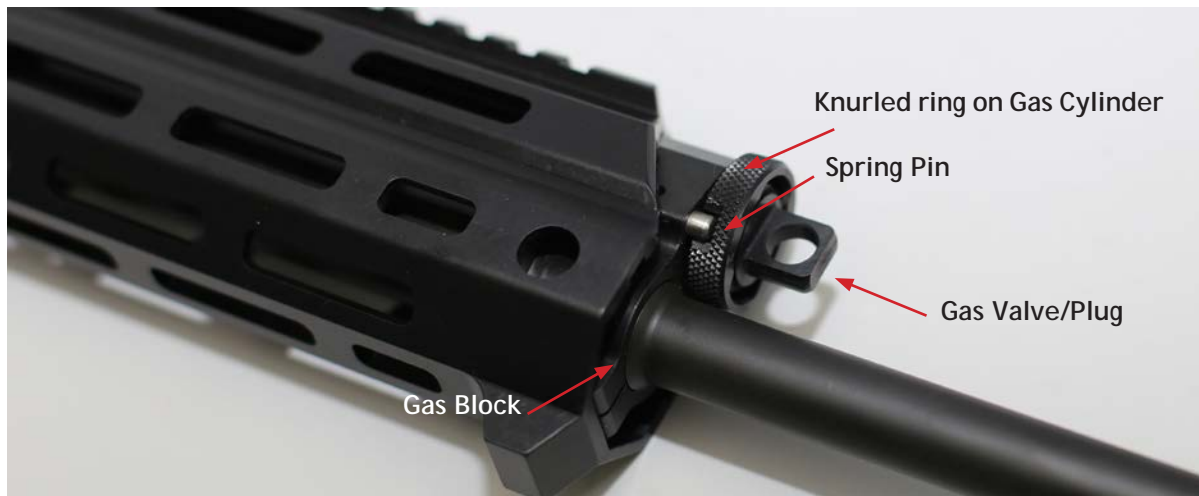


WARNING: NEVER DRY FIRE THIS FIREARM SINCE IT CAN CAUSE UNNECESSARY STRESS ON THE FIRING PIN AND POSSIBLE DAMAGE. ALWAYS USE SNAP CAPS TO PERFORM TRIGGER FUNCTION TRAINING OR TESTING.

Assembly is just the reverse of the described process.

With the bolt carrier removed you now have access to clean the internal parts of both the upper and lower receivers, including the bore of the rifle. Always clean the bore of the rifle by inserting cleaning rods and attachments from the chamber side of the rifle (NOT the muzzle end of the barrel) according to the instructions received with the cleaning kit.

Further disassembly is not necessary for routine maintenance, but can be accomplished by disassembling the gas valve, piston, and cylinder assembly.



Begin disassembling the gas valve by locating the spring-loaded pin on the outside of the gas cylinder, just forward of the gas block. Depress that pin and hold the knurled (textured) ring which is at the end of the gas cylinder while you rotate the gas valve plug counter-clockwise as seen from viewing the assembly from the muzzle end of the rifle (NEVER point the rifle at your face or head).

After rotating the gas valve a quarter turn or more, you can pull it straight out, towards the muzzle-end of the barrel. Set the gas valve aside.

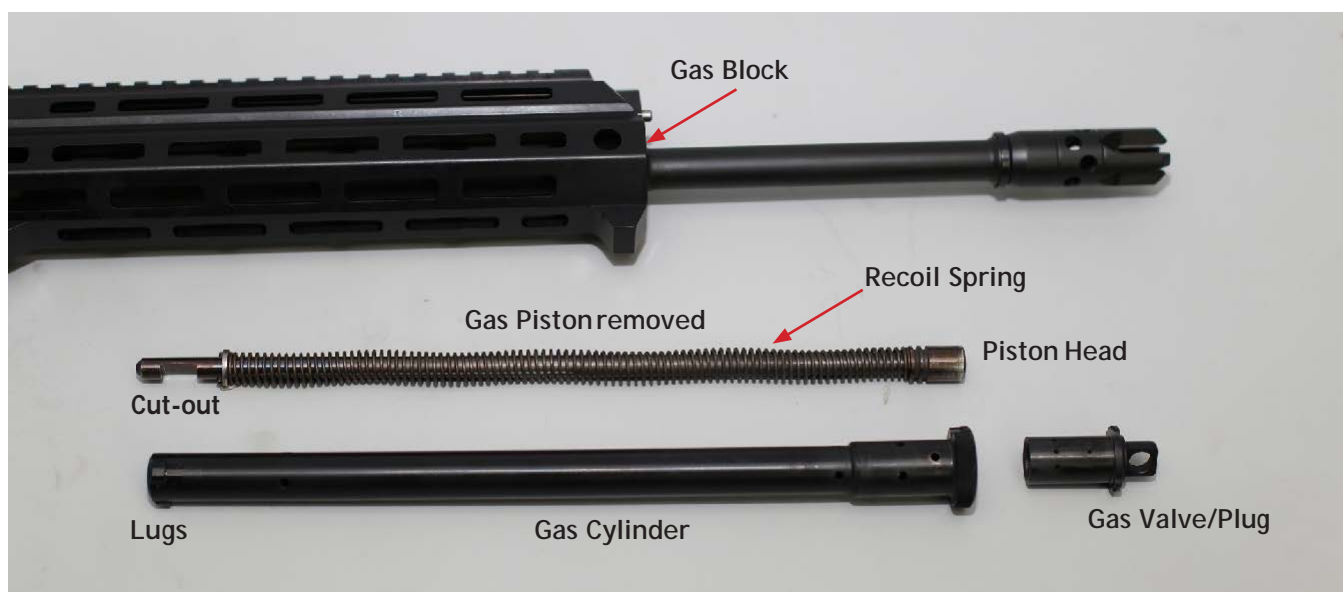


Next, remove the gas cylinder. To remove it, depress the spring pin again and rotate the gas cylinder by grasping the knurled ring at the forward (muzzle) end of the gas cylinder and turning it in either direction. If the action has already been disassembled, and the charging handle is removed, the gas piston will come out with the cylinder. If the charging handle has not been removed, then the piston will remain in place and the cylinder will be extracted from over the piston. In either case, the cylinder is removed by continuing to turn and rotate the assembly until the cylinder is free.



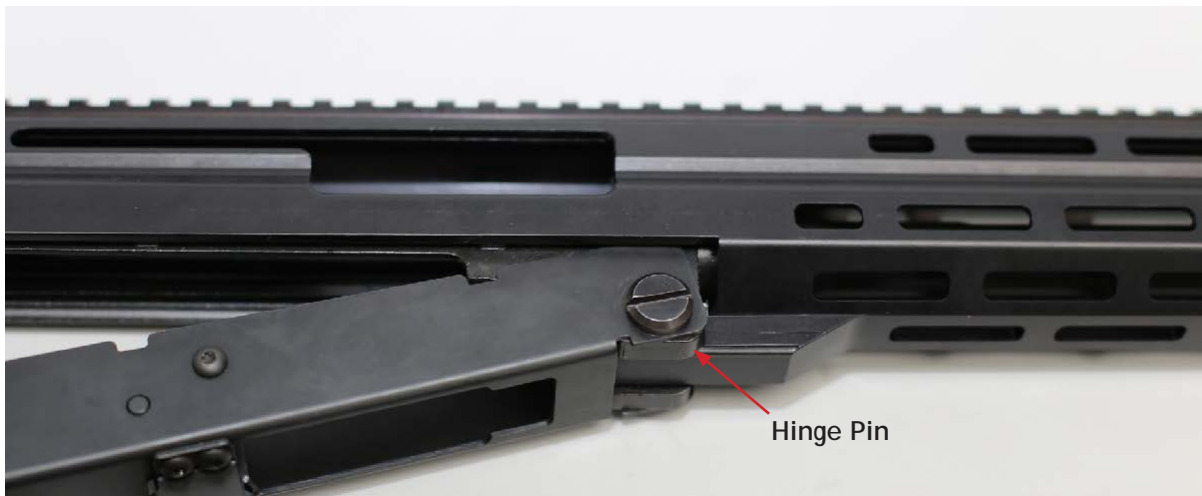
The piston and the return spring around the piston may remain engaged. If the piston remained after removing the cylinder, it can be removed now by removing the charging handle and rotating the piston in place until it is free (one half turn).

NOTE: The position of the channel cutout in the piston before rotating it. This is where it is secured to the bolt carrier by the charging handle in an assembled rifle. This will help you to properly orient the piston when you replace it.



The final step in disassembly involves removing the hinge pin that holds the upper and lower receiver together. This pin is a screw-pin, and can be removed by holding one side of the pin in place while the other side is turned with a small coin or a screwdriver. If you do not have the proper screwdrivers, using a penny or a dime to turn this screw will prevent marring of the metal.

After unscrewing the pin, it may fall free, or you may need to drive it out with a brass punch. Do not drive the screw-pin out with a steel object, as it is threaded internally, and marring the threads will cause problems in reassembly. Use only an object made of a softer metal, plastic, or other material that will not damage steel threads.



After removing the screw-pin, the upper and lower receivers can be separated, and the barrel and upper receiver can be removed from the receiver housing. It is not necessary to remove the hinge pin to clean the rifle, but it can be removed if desired for convenience.

FURTHER DISASSEMBLY IS NOT RECOMMENDED, except by a qualified gunsmith.

Assembly

Reversing the disassembly steps can reassemble the rifle. We advise you to read the entire assembly instructions once before beginning to reassemble the rifle.

The gas cylinder is installed by inserting it through the gas block. Insert it so that the lugs on the posterior end go through and seat toward the back (rear) of the firearm. The anterior (forward) end consists of the knurled ring and spring-loaded pin, which extends from the front of the gas block. Begin by holding the cylinder so that the notch for the spring pin is closest to the barrel. We will call this position "6:00" and the side furthest from the barrel "12:00." Insert the cylinder in the 6:00 position. When the cylinder is in place, and seated as far through the gas block as possible, turn the cylinder clock-wise until you feel the lugs engage, the spring-loaded pin release and lock the knurled ring into place. With the cylinder properly



installed, now install the piston by inserting it through the cylinder. One end of the piston has a cut-out for the charging handle to engage, while the other end is the piston head. Insert the cut-out end first, guiding it through the cylinder until it is visible through the ejection port in the receiver. Rotate the piston until the cut-out faces down (towards the magazine well) and is square to the orientation of the receiver.

Finally, install the gas valve. It must be installed so that the arrow on the handle of the gas valve is oriented towards the barrel of the rifle. The gas valve has broad lugs that fit down into openings in the top of the gas cylinder. Insert the valve and rotate it to the proper orientation.

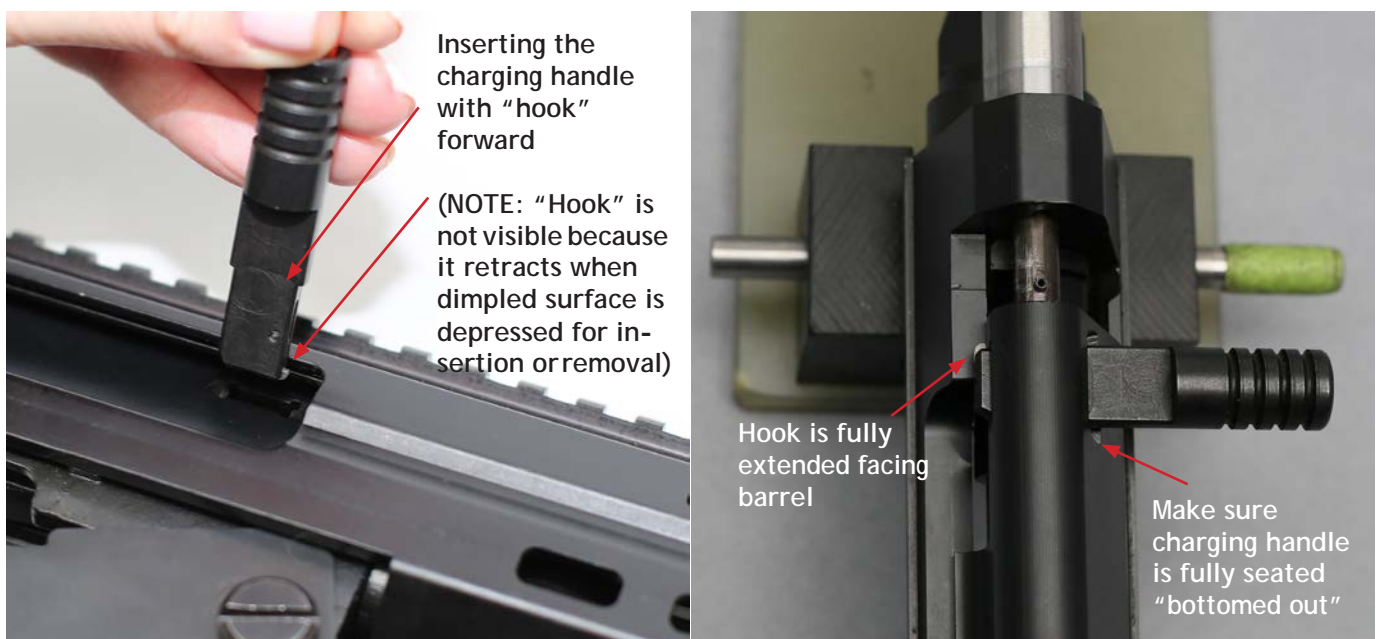
NOTE: The bolt carrier cannot join to the gas piston unless the gas valve is inserted. Orient the bolt carrier so that the cutout of the charging handle is forward (towards the muzzle). Inserting the bolt and bolt carrier is accomplished by extending the bolt as far forward in the carrier as it will go (if it comes out of the bolt carrier, re-insert it, rotate it clock-wise as far as possible while pushing it as far forward in the carrier as possible by pushing on the end at the rear of the bolt carrier).



Once the bolt carrier is inserted, use a small screwdriver to push the carrier forward until the bolt rotates and is seated all the way back into the carrier.

With the cylinder/piston assembly in place (before inserting the bolt carrier, and the bolt carrier seated as far forward as possible) the charging handle may be inserted.

You will see a small "hook" at the "inward" end of the charging handle. Position the charging handle above the slot in the bolt carrier made to receive it. The "hook" should be forward. Depress the metal surface in the "outer" end of the charging handle completely with an object such as a small screwdriver or chamber flag. When you feel that surface "bottom out," you have relieved the pressure on the "hook" at the other end of the charging handle. Insert the charging handle firmly while continuing to press down. The charging handle is seated when there is less than 1/4 inch of clearance between the knurled part of the handle and the surface of the receiver housing.



At this point, all parts should be properly installed, and you should now adjust the gas valve. Depress the spring pin, rotate the gas valve slightly, and then release the spring pin. Now continue to rotate the gas valve until you hear it "click" into place with the arrow at the 6:00 position. The "click" is the spring-loaded pin in the gas block moving to lock the gas valve into place. For further adjustments, press down on the gas valve and turn. Please consult the "Gas Valve Plug Adjustment" section for more information about adjusting the Gas Valve. However, for assembling the rifle, note that the Gas Valve is marked with an arrow, and the face of the knurled section of the gas cylinder is marked with the numbers, "1", "0", and "2". When the cylinder is properly installed, the "1" should be located at the 6:00 position (closest to the barrel of the firearm, pointing directly at the barrel). Assemble the Gas Valve so that the arrow is pointing to the "1" position: This is the normal firing position.

Gas Valve Plug Adjustment

The M10X™ rifle comes standard with an adjustable gas valve. The adjustments are designated as "1," "0", and "2." In the latest version it is "1," and "II" (The reversed Arrow positions have been left for suppressed capabilities only; please contact M+M for further assistance). The normal operating position is for the arrow on the Gas Valve Plug to be oriented to the "1" position, as indicated on the cylinder, just above the knurled end at the muzzle end of the gas cylinder.

The "2" (II) position allows for a greater than normal amount of gas to be vented into the rifle's operating mechanism. There are limited circumstances under which this might be desirable. Once circumstance can occur while operating the rifle in extremely cold conditions (in negative weather temperatures) rates of the propellant found in ammunition causes the pressure to drop, and it is possible for the pressure to drop low enough to cause the rifle to function less consistently. Another circumstance is if the rifle has become very dirty and is not cycling reliably, or if lower-pressure ammunition is being used. In these cases, it may be useful to adjust the valve to the "2" or "II" position, this will allow more gases to enter the gas piston system. However, operating the rifle in the "2" (II) position when there is NOT a low-pressure situation puts greater stress on the operating parts: Thus it is not recommended to operate the rifle on the "2" (II) position unless necessary.



Cleaning

We recommend using high quality, commercial solvents for cleaning the M10X rifle. A trusted gun dealer may recommend reliable cleaning products for this rifle, but be aware that some of these products cannot be safely mixed. Discuss these issues with a gun dealer and inquire about proper cleaning methods and procedures.

Both the rifle bore and the internal parts should be cleaned periodically, especially after shooting the rifle. With proper care, the M10X rifle will provide you with many years of use. Be aware that some imported ammunition may be corrosive, and use of corrosive ammunition requires more thorough and careful cleaning. We do not recommend the use of corrosive ammunition, but if you use it, you should be sure to clean every accessible surface of the rifle as soon as possible after every use. Some consumers have reported that imported ammunition that is marked as "non-corrosive" is actually is corrosive; so if you use imported ammunition, we recommend a thorough cleaning after every shooting, regardless of the markings on the ammunition to avoid damage to the rifle.

Lubrication

Your M10X™ rifle has been designed to run safely and effectively with a variety of lubrication conditions, and the design is tested to be operational with no lubrication or with a surplus of lubrication. However, the life of the rifle will be extended with proper lubrication, and we recommend maintaining proper lubrication at all times. M+M, Inc. has high quality lubricants available, designed and tested to aid in operating the rifle in extreme conditions, and we recommend using M+M lubricants. However, any appropriate firearm lubricant from any quality firearms or firearm accessories manufacturer can be used.

All internal parts that are removed for cleaning should be lubricated before reassembling the firearm. Again, the rifle will function with a wide variety of lubrication levels, but the ideal condition is a light film of lubrication on all parts that have bearing surfaces (surfaces in contact with other surfaces, particularly surfaces of moving parts).

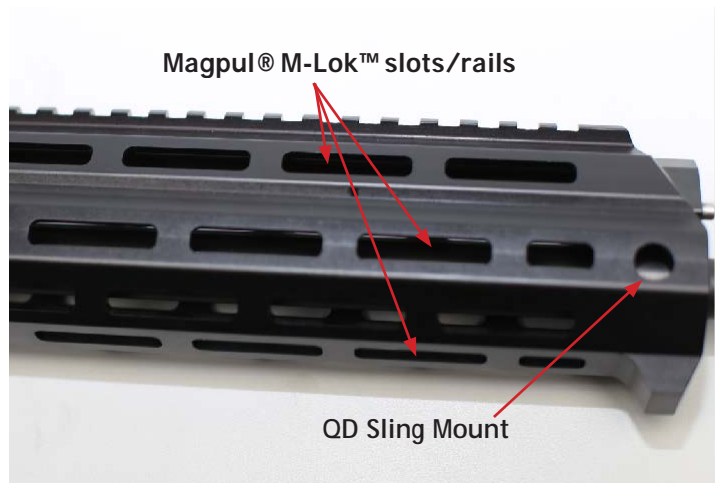
As you use your rifle, you will begin to note certain places where slight wear is evident. This is normal, and is not cause for concern. The significant parts of your M10X rifle have been treated with a nitride finish that is very hard, and a slight marring of bearing surfaces over time is normal. However, all of these places where wear becomes visible are particularly appropriate for lubrication include: The entire bolt and bolt carrier assembly (though the bolt face should be wiped clean before assembly); the gas piston; and the return spring that surrounds the gas piston; also, lightly lubricate the trigger/hammer assembly, the hinge pin, and the safety lever.

No parts should be lubricated to the point that lubrication is running, dripping, or pooling from the firearm. It is possible for lubricants to render the primer of a cartridge or cartridges inert, so that the cartridge will not fire. Never allow lubrication to run into the magazine or come into contact with ammunition.

Accessories

Your M10X™ rifle is adaptable for add-on accessories:

1. The aluminum receiver housing / forearm-cover includes a 18" picatinny rail on top which allows you to use a variety of sights and optics. The rectangular slots parallel to the barrel are compatible with the Magpul® M-LOK™ System and the two round holes to the left and right of the front receiver housing (M10X-Z only) are QD sling attachment points.



2. **Stocks:** there are currently two stock versions on the market.

- The Phoenix Technology® 5-position adjustable stock adapter included in the ELITE version is compatible with all AR-15 commercial spec stocks and will accept any stock designed for that adapter.

- The Zhukov® 5-position right side-folding stock which includes a QD sling attachment point on the left side on the receiver stock interface. The Magpul Zhukov Stock also offers additional QD sling attachment points in the most rearward section of the stock (adapters are sold separately). Magpul created various cheek risers in different heights for the Zhukov stock. For further information or suggestions please visit our website. www.mm-industries.com



The multitude of adapters rails and slots will allow you to choose from a wide variety of optics, lights, sights, sling and bipod mounts, and lasers. M+M makes

no recommendations and does not guarantee that all of these will be appropriate and useful on your rifle. Accessories are a personal preference; what works for one shooter, may not work for another. We encourage you to discuss these options with your dealer or try them on your rifle before purchasing them. However, these options do make your M10X among the most versatile in the marketplace.

Replacement Parts Policy

Our Service Department maintains a full stock of replacement parts. Even though most gunsmiths have the knowledge, training, and the ability to make necessary repairs to your firearm, the skill and workmanship of any particular gunsmith is totally beyond our control.

Should your firearm ever require service, we strongly recommend that you return it to M+M Inc.

A firearm is a precision instrument and some replacement parts will require individual fitting to ensure correct operation.

A wrong part, improper fitting, or incorrect mechanical adjustment may result in an unsafe condition or dangerous malfunction, damage to the firearm, or cause possible serious injury to the shooter or others.

IF ANY PART IS ORDERED WITHOUT RETURNING THE FIREARM TO M+M Inc., the customer bears full responsibility for ensuring that the part supplied is correct for their particular firearm and is properly installed and fitted by a qualified gunsmith.

M+M Inc. CANNOT BE RESPONSIBLE FOR THE FUNCTIONING OF ANY FIREARM IN WHICH REPLACEMENT PARTS ARE INSTALLED BY OTHERS.

Domestic Limited Warranty

Thank you for purchasing the M+M, Inc. M10™ Series Sporting Rifle. Our intention is for you to enjoy this quality firearm for years to come. Our Customer Service staff is very friendly, extremely proficient, and available to help you with any issues that arise in using your new rifle. Customer Service is available by phone, fax, mail, or email. Contact Customer Service for warranty repairs or questions regarding the operation of your M10™ Series Sporting Rifle.

M+M, Inc. Customer Service
Northglenn, CO 80233

P: +1 866.926.5419
F: 720.504.5436
warranty@mm-industries.com

IMPORTANT: Read this entire document BEFORE returning firearms for service.

Warranty Registration

In order to take advantage of the M+M, Inc. Limited Warranty, you **MUST** register your firearm within 90 days of the original purchase of the firearm. You may register it using the Warranty Registration Card inserted in the manual materials that are shipped with the new firearm, or by going on-line to: www.mm-industries.com/warranty

All requested information must be provided in every field of the Warranty Registration Card or web page in order to activate your warranty.

M+M, Inc. M10™ Series Sporting/DEFENSE Rifle Limited Warranty

Limited Warranty

Your M+M, Inc. M10™ Series Sporting/Defense Rifle will be serviced for defects in material or workmanship, at no expense to the original purchaser of a new M10™ Series Sporting Rifle. Defective parts will be replaced or repaired at the option of M+M, Inc. for the duration of this limited warranty.

Terms of Warranty

The Warranty Period for the M10™ Series Sporting Rifle is one year from date of original retail purchase. Be sure to retain the sales receipt as proof of purchase date. * Any claims will not be honored without sales receipts.

Exceptions

If a firearm submitted for repair is found to be within operating specifications, a service fee of \$95 will be assessed before your firearm is returned to the customer.

The rifle must be returned fully assembled and must be accompanied with the original magazine before we can perform any warranty service work. Please do not send any aftermarket items to M+M, Inc. with the firearm. M+M, Inc. will not be responsible for lost, missing or damaged aftermarket accessories.

IMPORTANT: IF ANY OWNER OR ANY OPERATOR OF THIS RIFLE MAKES ANY MECHANICAL MODIFICATIONS, ADJUSTMENTS OR USES UNAUTHORIZED PARTS, M+M, INC. WILL NOT HONOR ANY WARRANTY CLAIMS AND/OR ASSUME

RESPONSIBILITY FOR THE FUNCTIONING OF THIS FIREARM, AS THESE UNAUTHORIZED MODIFICATIONS RENDER THIS WARRANTY NULL AND VOID. YOUR M10TTM SERIES RIFLE HAS BEEN DESIGNED AND MANUFACTURED TO PERFORM PROPERLY WITH THE ORIGINAL PARTS AS INSTALLED AT THE FACTORY. IT IS THE OBLIGATION OF THE CONSUMER TO ENSURE THAT ANY PARTS REPLACED OUTSIDE OF THE FACTORY ARE THE PROPER PARTS, PROPERLY INSTALLED, AND HAVE NOT BEEN MODIFIED OR ALTERED IN ANY WAY. MODIFIED, ALTERED, OR INCORRECTLY INSTALLED PARTS CAN RESULT IN DAMAGE TO THE FIREARM, INJURY, OR DEATH TO THE OPERATOR AND/OR BYSTANDERS THROUGH MALFUNCTION. ALWAYS HAVE YOUR RIFLE SERVICED BY A QUALIFIED GUNSMITH.

WARNING: THIS FIREARM IS NOT RATED FOR FULLY AUTOMATIC OPERATION. ANY DAMAGE OR MALFUNCTION DUE TO FULLY AUTOMATIC OPERATION AND ANY OTHER MODIFICATION TO THIS FIREARM WILL VOID ANY LIABILITY AND/OR WARRANTY FROM M+M INC.

How to Obtain Warranty Service:

1. Notify Customer Service that you have an issue. Some issues can be easily resolved without sending the firearm in for service. Service is fastest when you notify Customer Service of the issue by phone.
2. Describe your problem to Customer Service. They will need to know what is happening with the rifle and how you discovered the problem. If you have a broken part that you can identify, please consult the diagram and list of parts included in your Owner's Manual so that you can try to identify the exact part that is broken by name. If you don't know what part is broken or exactly what the problem is, describe what is happening that makes you believe there is a problem.
3. Provide the model number, serial number and date of purchase of your firearm. It is best to have these things ready when you call, or include them in the written contact.

If deemed necessary, your Customer Service Representative will give you instructions for returning the rifle to the factory. You must follow the instructions your Customer Service Representative gives you regarding the return of the firearm, whether you ship it or you give it to your dealer to ship.

Various Local, State and Federal laws govern the transfer and transportation of firearms. For that reason, we recommend that you consult a dealer in your state for information on how to transport your firearm. M+M, Inc. is not responsible for knowing the applicable laws of every state and local ordinance. That is your responsibility.

LIMITATIONS: THIS WARRANTY INFORMATION IS PROVIDED TO THE ORIGINAL OWNER OF THE M10™ SERIES SPORTING RIFLE, AND NO PERSON IS AUTHORIZED TO EXTEND, MODIFY, OR ACCEPT ANY OTHER OBLIGATION OF THIS WARRANTY ON BEHALF OF M+M, INC. BEYOND THIS ORIGINAL WARRANTY, EITHER AT THE DEALERSHIP WHERE THIS RIFLE WAS PURCHASED OR AT THE FACTORY. M+M, INC. ONLY ASSUMES RESPONSIBILITY FOR DEFECTS IN MATERIALS AND WORKMANSHIP AS SET FORTH AND SPECIFIED IN THIS LIMITED WARRANTY DOCUMENT. M+M, INC. ACCEPTS NO FURTHER RESPONSIBILITY OR LIABILITY BEYOND WHAT IS STATED DIRECTLY IN THIS DOCUMENT. UNDER NO CIRCUMSTANCES, NOR IN ANY CASE OR EVENT, EITHER M+M, INC. OR ITS REPRESENTATIVES SHALL BE RENDERED LIABLE IN ANY WAY FOR ANY DAMAGES, INJURIES, OR DEATH THAT COULD RESULT BY OWNING THIS RIFLE. PURCHASING THIS RIFLE IS AN ACKNOWLEDGMENT OF THE LIMITED LIABILITY OF M+M, INC. AND THE OWNER ALSO ACCEPTS AND UNDERSTANDS EVERY CONDITION IN THIS AGREEMENT AND AUTOMATICALLY ASSUMES, BUT IS NOT LIMITED TO THE RESPONSIBILITY FOR THE MAINTENANCE, SAFE OPERATION, AND STORAGE OF THIS RIFLE. UPON PURCHASE OF THIS FIREARM THE OWNER CONTRACTUALLY AGREES TO ABIDE BY ALL FEDERAL, STATE, AND LOCAL FIREARM REGULATIONS IN ADDITION TO THE MANUFACTURERS (M+M, INC.) RECOMMENDATIONS REGARDING THE USE OF THIS RIFLE.

Thank you for purchasing the M+M, Inc. M10™ Series Sporting/Defense Rifle. Our intention is for you to enjoy this quality firearm for years to come. To that end, our Customer Service staff is well-trained and available to help you with any issues that arise in using your new rifle. Customer Service is available by phone, fax, mail or email. Contact Customer Service for warranty repairs or questions regarding operation of your M10™ Series Sporting/Defense Rifle.

M+M, Inc.
Customer Service
Northglenn, CO 80233
P: +1 866.926.5419
F: 720.504.5436
warranty@mm-industries.com



MADE IN THE USA

NOtes

This image shows a single sheet of white paper with horizontal ruling lines. The lines are evenly spaced and run across the width of the page. There are no margins, text, or other markings on the paper.

Serial Number:

--

Inspected by:

--

M10 | X

MODERN DEFENSE RIFLE™

7 . 6 2 X 3 9



M+M INDUSTRIES
MODERN DEFENSE RIFLES™